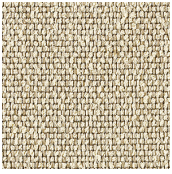


ALLIANCE

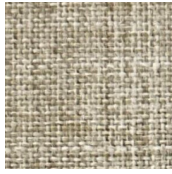
ELEVATE



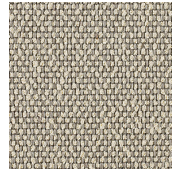
MOMENTUM
TEXTILES & WALLCOVERING



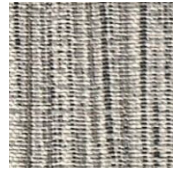
Beta - Malt



Top Talent - Limestone



Beta - Pearl



Starfall - Arctic



Hum - Cane



Starfall - Wheat



Boom II - Parchment



Curl - Cloud



Colorloop - Maple



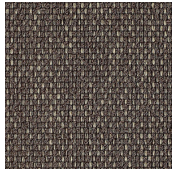
Top Talent - Sediment



Curl - Pebble



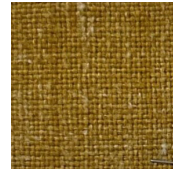
Colorloop - Mineral



Beta - Graphite



Boom II - Goldenrod



Top Talent - Sunburst



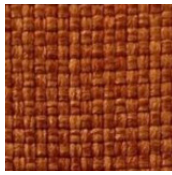
Hum - Golden



Beta - Quince



Boom II - Spice



Hum - Flame



Curl - Spice



Top Talent - Rosewood



Hum - Sienna



Starfall - Tango



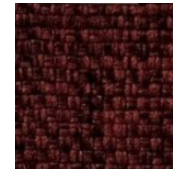
Hum - Carmine



Colorloop - Ember



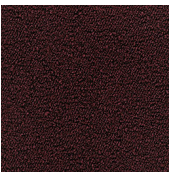
Curl - Ember



Hum - Berry



Boom II - Garnet



Boom II - Heather



Starfall - Cocoa



Colorloop - Hatchet



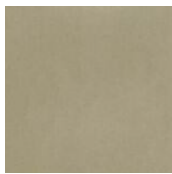
Starfall - Ruby



Curl - Moss



Cordovan EPU - Ivory



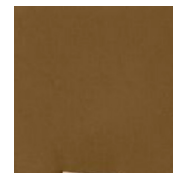
Cordovan EPU - Sand Dollar



Cordovan EPU - Dove



Cordovan EPU - Natural



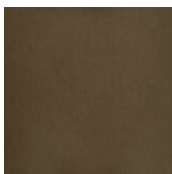
Cordovan EPU - Chestnut



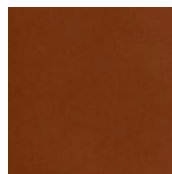
Cordovan EPU - Pebble



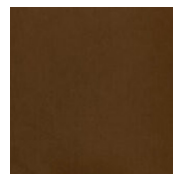
Cordovan EPU - Taupe



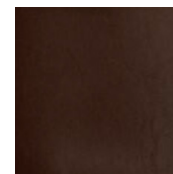
Cordovan EPU - Nutshell



Cordovan EPU - Saffron



Cordovan EPU - Acorn



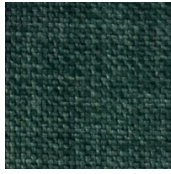
Cordovan EPU - Burgundy



Cordovan EPU - Mahogany



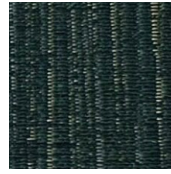
Colorloop - Moss



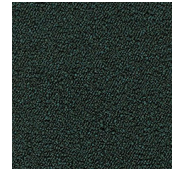
Top Talent - Kelp



Colorloop - Alpine



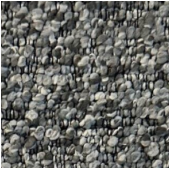
Starfall - Juniper



Boom II - Spruce



Colorloop - Cicle



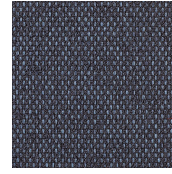
Colorloop - Fog



Hum - Spearmint



Hum - Granite



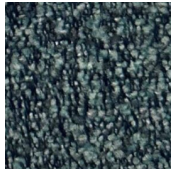
Beta - Cadet



Colorloop - Aquatic



Top Talent - Fin



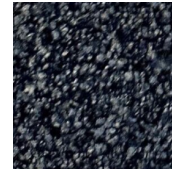
Curl - Tidal



Top Talent - Atlantic



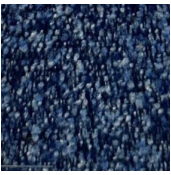
Curl - Mist



Curl - Ink



Hum - Glacier



Curl - Azure



Hum - Stream



Starfall - Indigo



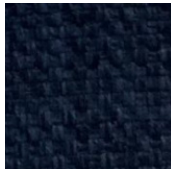
Starfall - Marina



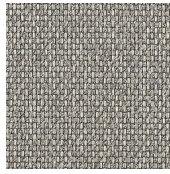
Top Talent - Ink



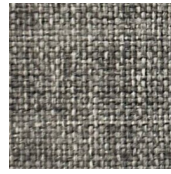
Colorloop - Cosmos



Hum - Indigo



Beta - Crater



Top Talent - Stratus



Starfall - Steel



Starfall - Pepper



Curl - Steel



Colorloop - Smoke



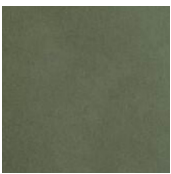
Hum - Flint



Top Talent - Mercury



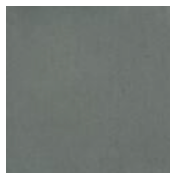
Starfall - Shadow



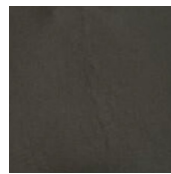
Cordovan EPU - Alabaster



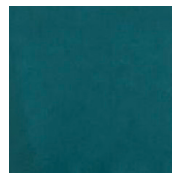
Cordovan EPU - Dusk



Cordovan EPU - Aspen



Cordovan EPU - Storm



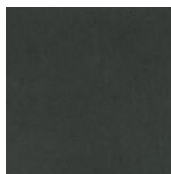
Cordovan EPU - Turquoise



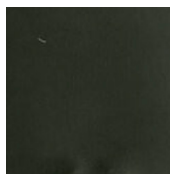
Cordovan EPU - Azure



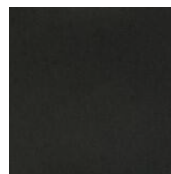
Cordovan EPU - Slate



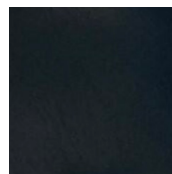
Cordovan EPU - Shadow



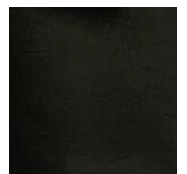
Cordovan EPU - Hunter



Cordovan EPU - Steel











Cordovan EPU - Nordic



Cordovan EPU - Onyx

ELEVATE ALLIANCE

| Pattern - width | Fiber content | Finish | Abrasion | Lightfastness | Approx. repeat | Cleaning code |
|---|--|----------|------------------------|------------------------|----------------------|-----------------|
| Beta - 55"  | 67% Repreve® Recycled Polyester, 33% Polyester | | 190,000 double rubs | Class 4 40 hours | 1/4" V, 1/8" H | WS |
| Boom II - 58"  | 74% Recycled Polyester, 26% Polyester | | 150,000 double rubs | Class 5 40 hours | | WS |
| Colorloop - 56"  | 70% Polyester, 30% Recycled Polyester | Crypton® | 220,000 double rubs | Class 4.5 40 hours | | WS BC (10:1) |
| Cordovan EPU - 54"  | 100% EPU Polyurethane | | 185,000 double rubs | Class 4.5 200 hours | | WS BC (4:1) |
| Curl - 55"  | 100% Post Consumer Recycled Polyester | | 300,000 double rubs | Class 5 40 hours | | WS |
| Hum - 55"  | 60% Post Consumer Recycled Polyester, 40% Polyester | Crypton® | 200,000 double rubs | Class 5 40 hours | | WS BC (10:1) |
| Starfall - 55"  | 61% Post Consumer Recycled Polyester, 39% Polyester | | 100,000 double rubs | Class 4.5 40 hours | 14 3/4" V, 14 3/4" H | WS |
| Top Talent - 54"  | 100% Recycled Olefin | | 200,000 double rubs | Class 5 40 hours | | WS BC (10:1) |



GREENGUARD certified.
CA Section 01350 compliant
Eligible for CHPS Low-Emitting
Material Credits



Search for fabrics by
approved cleaners



Find hundreds of pre-approved,
in grade and in stock fabrics
in 5 simple steps

* ACT® Registered Certification Marks

These fabrics when used with proper components are compatible with California Technical Bulletin 133

Multiple factors affect fabric durability and appearance retention, including end-user application and proper maintenance

Abrasion test results exceeding ACT Performance Guidelines are not an indicator of product lifespan

Cleaning Code Definition

- W: Water-based foam or cleaner
- WS: Clean with water-based cleaning agents or foam
- BC: Bleach Cleanable

Visit momentumtextilesandwalls.com to view full pattern repeat and complete specs

©2024

08993396

