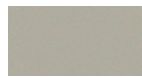




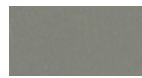
HYDE CV PARCHMENT



EVO CV ASH



PUTTY



PEWTER



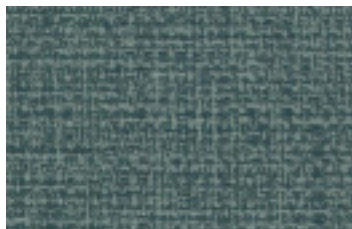
VANGUARD CV FOIL



PEBBLE



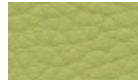
FRENCH



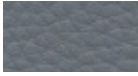
LINEN CV CYPRUS



TRIBECA CV CLOUD



PERIDOT



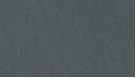
LONDON



TANGELO



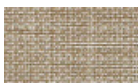
BLUET



JETTY



CREME



LUNETTE



SPRUCE



PARCHMENT



SKY



MICA



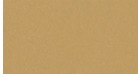
CASCADE



CELADON



FERN



CORK



KELLY



BLUESTAR



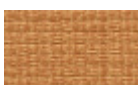
GILDED



SAVOR



AUTUMN



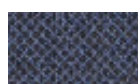
MANDARIN



JADE



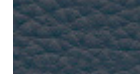
DOWNPOUR



MARINER



FOSSIL



INKWELL



AQUA



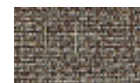
INDIGO



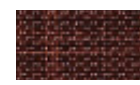
CYPRESS



SPROUT



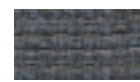
CAVE



SEQUOIA



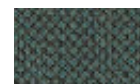
KHAKI



CADET



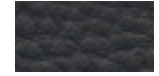
RUBINE



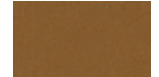
PLUME



CYPRUS



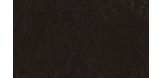
ONYX



SADDLE



MINK



ONYX



CALICO



STEEL



CARBON



NICKEL



CHARCOAL



SHADOW



SLATE

# CV SOLIDS

## ALLIANCE

Pattern - width	Fiber content	Finish	Abrasion	Lightfastness	Approx. repeat	Cleaning code
EVO CV - 54" ▲ ▲ ▲ ▲ ▲ *	100% Clean Vinyl/Phthalate Free	Protective Topcoat	1,000,000 double rubs	Class 4 200 hours		WS BC (10:1)
Hyde CV - 54" ▲ ▲ ▲ ▲ ▲ *	100% Clean Vinyl/Phthalate Free	Protective Topcoat	1,000,000 double rubs	Class 5 200 hours		WS BC (10:1)
Linen CV - 54" ▲ ▲ ▲ ▲ ▲ *	100% Clean Vinyl/Phthalate Free	Protective Topcoat	288,000 double rubs	Class 4.5 200 hours		WS BC (10:1)
Tribeca CV - 54" ▲ ▲ ▲ ▲ ▲ *	100% Clean Vinyl/Phthalate Free	Protective Topcoat	100,000 double rubs	Class 4 200 hours		W BC (10:1)
Vanguard CV - 54" ▲ ▲ ▲ ▲ ▲ *	100% Clean Vinyl/Phthalate Free	Protective Topcoat	100,000 double rubs	Class 4 200 hours		W BC (10:1)



GREENGUARD certified.  
CA Section 01350 compliant  
Eligible for CHPS Low-Emitting  
Material Credits



Search for fabrics by  
approved cleaners



Find hundreds of pre-approved,  
in grade and in stock fabrics  
in 5 simple steps

\* ACT® Registered Certification Marks

These fabrics when used with proper components are compatible with California Technical Bulletin 133

Multiple factors affect fabric durability and appearance retention, including end-user application and proper maintenance

Abrasion test results exceeding ACT Performance Guidelines are not an indicator of product lifespan

Cleaning Code Definition

- WS: Clean with water-based cleaning agents or foam

Visit [memosamples.com](https://memosamples.com) to view full pattern repeat and complete specs

©2022

08993417



[memosamples.com](https://memosamples.com) | 800.366.6839

**MOMENTUM**  
TEXTILES & WALLCOVERING