

# SOURCE

**GRADEA** FABRICS

---

**MAYER**  
FABRICS

# FORTE



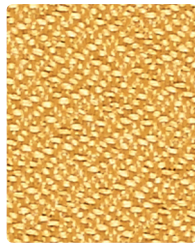
298-006  
**Tuxedo**



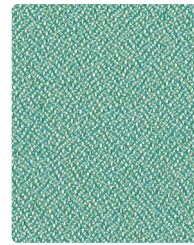
298-026  
**Flint**



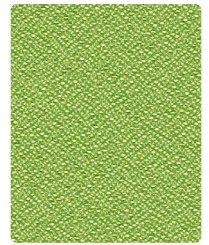
298-017  
**Pumice**



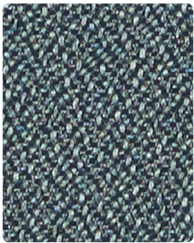
298-012  
**Sunray**



298-033  
**Fairway**



298-053  
**Grass**



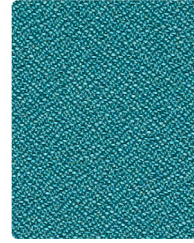
298-016  
**Slate**



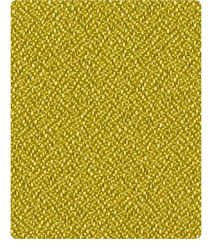
298-026  
**Oatmeal**



298-009  
**Pimento**



298-044  
**Peacock**



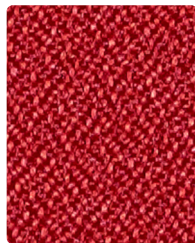
298-013  
**Avocado**



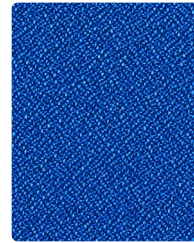
298-036  
**Char**



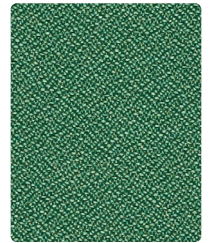
298-010  
**Mocha**



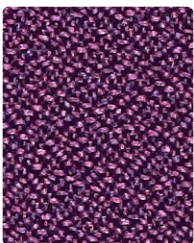
298-001  
**Rouge**



298-014  
**Blue Ray**



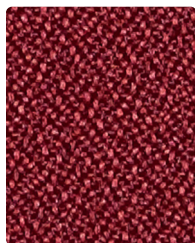
298-043  
**Hedge**



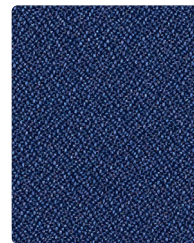
298-025  
**Grape**



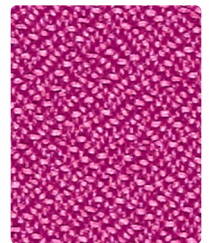
298-000  
**Fudge**



298-011  
**Port**

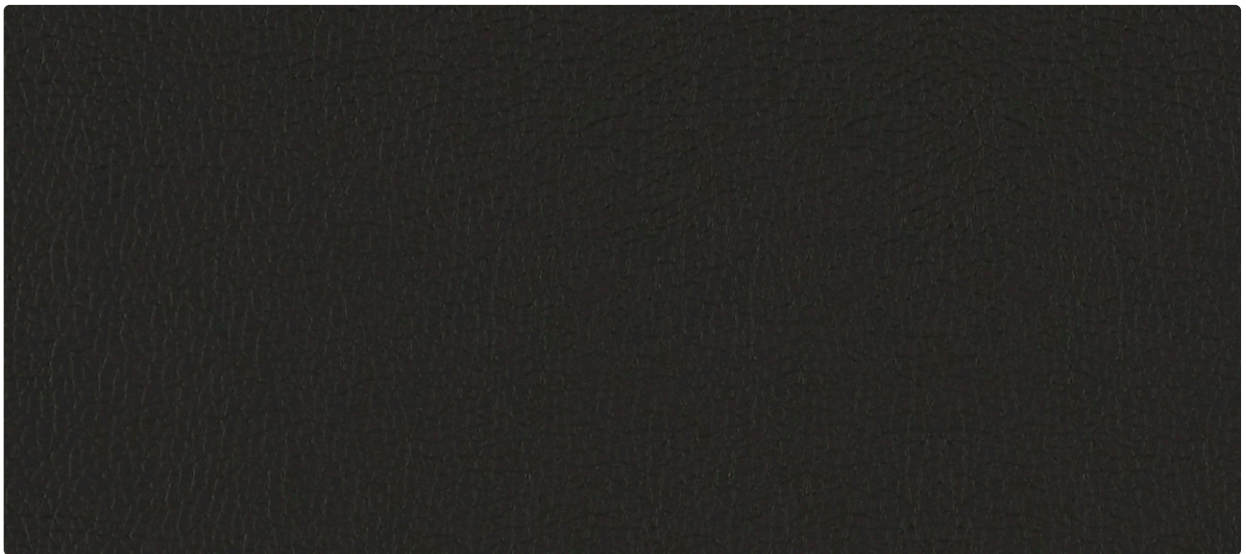


298-004  
**Cadet**



298-035  
**Magenta**

# RANCHERO



RC-006  
Black



RC-036  
Nickel



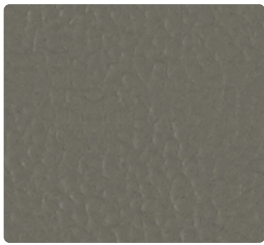
RC-020  
Driftwood



RC-010  
Greige



RC-001  
Lipstick



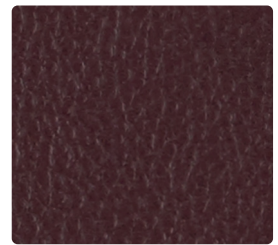
RC-026  
Slate



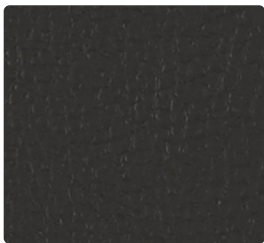
RC-007  
Ecrú



RC-003  
Basil



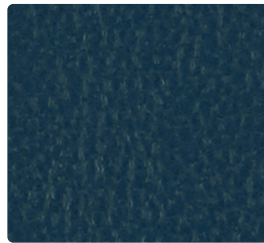
RC-008  
Brandy



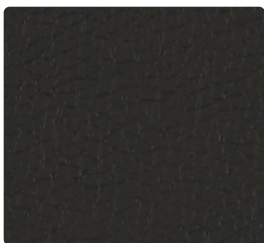
RC-016  
Thunder



RC-009  
Sepia



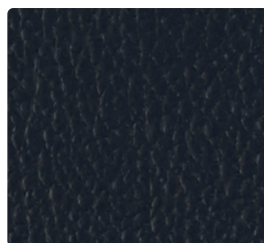
RC-004  
Sapphire



RC-006  
Black



RC-000  
Chocolate



RC-014  
Navy

# TECHNICAL INFORMATION

## Grade A | Interactive Card

<b>Pattern 54"</b>	<b>Forte</b>	<b>Ranchero</b>
Content	100% Polyester	100% Vinyl
Backing	Acrylic	Polyester
Certifications	GREENGUARD Gold	GREENGUARD
Weight/Linear Yd.	12.10 oz.	24.5 oz.
Pattern Repeat	None	None
Finish	Stain Repellent	None
Abrasion Wyzenbeek	183,000 <sup>^</sup>	250,000 <sup>^</sup>
Light-Fastness	40 hours	200 hours
Flammability	Cal TB 117, NFPA 260/UFAC ASTM E84 (Adhered) Class 2 or B	Cal TB 117, NFPA 260/UFAC FMVSS302
Cleaning Code	WS	W, CFC

### REDUCED ENVIRONMENTAL IMPACT

These products are GREENGUARD Certified or GREENGUARD Gold Certified for low chemical and particle emissions to UL standard UL 2818 and may contribute to LEED certification.

No FR Additives  
No Antimicrobial/Antibacterial Additives

### CARE AND CLEANING INFORMATION

W: Water-Based Cleaner      WS: Water/Solvent Cleaner  
CFC: Coated Fabrics Cleaning – Refer to Mayer website for complete cleaning info.

### DYE TRANSFER DISCLAIMER

Certain clothing and accessory dyes (such as those used on denim jeans) may migrate to lighter colors. This phenomenon is increased by humidity and temperature and is irreversible. Mayer Fabrics will not assume responsibility for dye transfer caused by external contaminants. Please check compatibility when using this product in combination with painted or varnished surfaces.

### ADDITIONAL INFORMATION

<sup>^</sup>Abrasion test results exceeding ACT Performance Guidelines are not an indicator of product lifespan. Multiple factors affect fabric durability and appearance retention.

\*A multi-use fabric that can be used for upholstery, panels, wrapped walls, and acoustic.  
Warranty: Standard Upholstery Five Year Warranty. For more information please refer to the Mayer website.  
Custom Colors: All patterns can be custom colored. Minimum yardage applies.

Digital Swatch Card Color Matching: Due to color variations on different monitors and color printers, actual swatch colors may vary slightly. Please request a memo sample from Mayer Fabrics to ensure proper color representation.  
Complete and current product information available at [mayerfabrics.com](http://mayerfabrics.com).



These fabrics meet or exceed these ACT performance guidelines.  
\*Certification Marks owned by ACT®

©2023  
SIGACD MF0423

# SOURCE

T. 800.722.0474  
17 Gilmore Drive Sutton, MA 01590  
[sourceinternationaldesign.com](http://sourceinternationaldesign.com)  
[cr@sourceinternationaldesign.com](mailto:cr@sourceinternationaldesign.com)

# MAYER FABRICS

T 800.428.4415      [mayerfabrics.com](http://mayerfabrics.com)  
500 S. Kitley Ave. Indianapolis, IN 46219