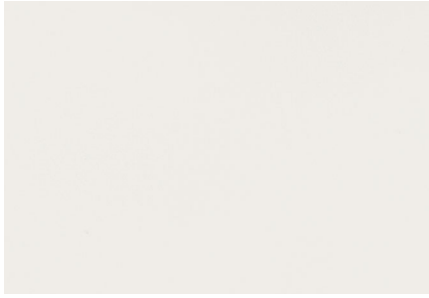
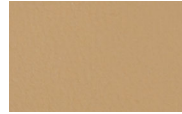


# SOURCE



SILICA CUMULUS



BROWNSTONE



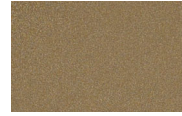
APPLETINI



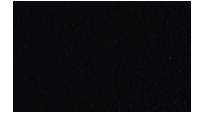
SKETCH



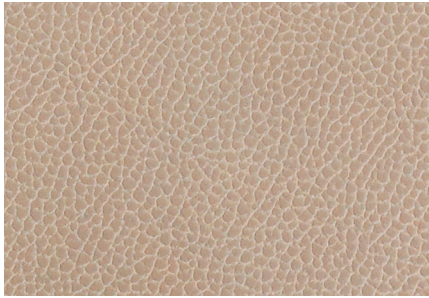
MARIGOLD



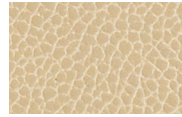
QUARTZ



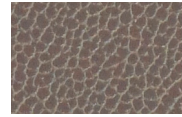
NERO



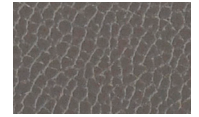
SILICA LEATHER DOVE



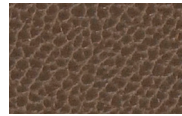
BARLEY



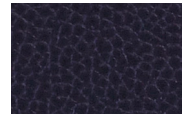
SHADOW



PEWTER



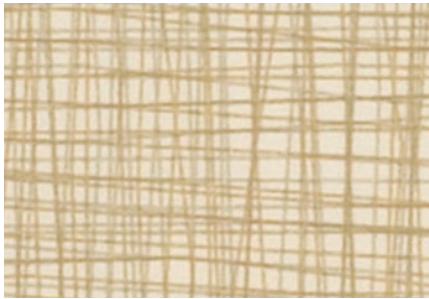
MINK



INK



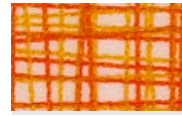
ECLIPSE



SILICA STRIDE ECRU



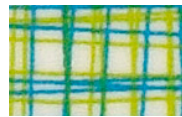
LIMESTONE



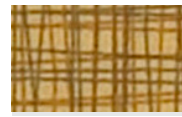
KOI



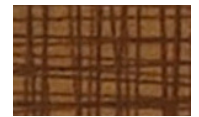
PLACID



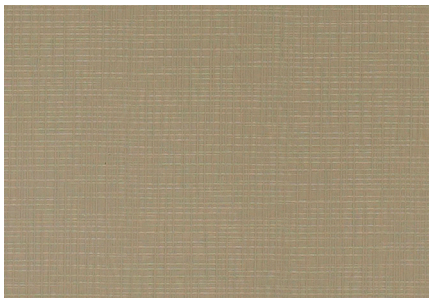
RESORT



WHEAT



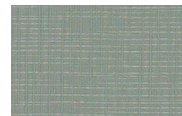
BURL



SILICA ETCH FLINT



DOE



RAIN



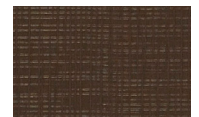
SLATE



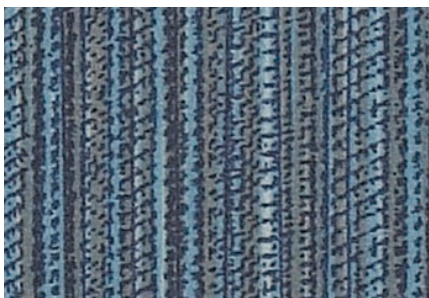
MANTA



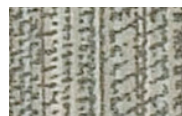
INK



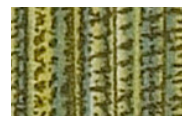
MINK



SILICA KIP THALO



NICKEL



WILLOW



BISCAY



CAJUN



ROOT



GALENA



ENDURANCE EPU GULL



BISQUE



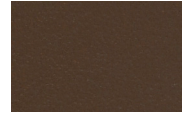
CASCADE



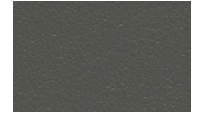
INK



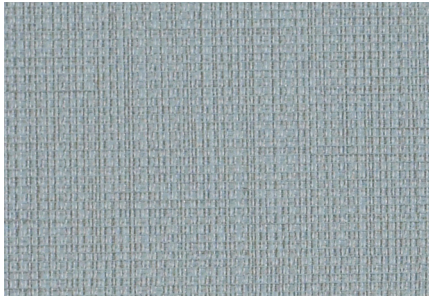
SEED



JAVA



JETTY



BEELINE EPU NIMBUS



FOSSIL



SISAL



PORTOBELLO



CORK



GEYSER



FORGE



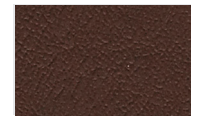
CASHMERE II BONE



SMOKE



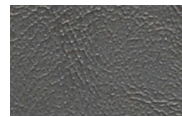
TAUPE



CHOCOLATE



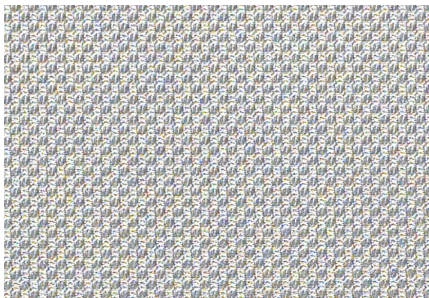
OCEAN



MOUNTAIN



EBONY



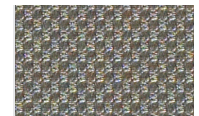
EON EPU COQUETTE



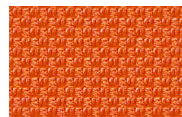
SPRING



ATLANTIC



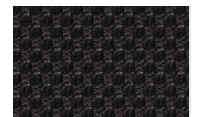
MINERAL



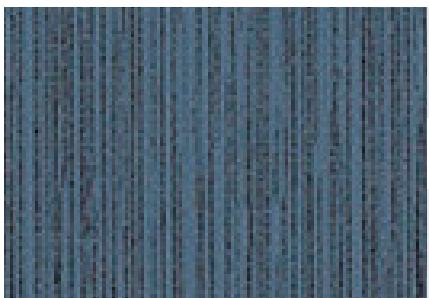
BLAZE



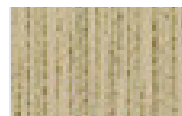
ANEW



TYPOGRAPHIC



GROOVE EPU GLACIER



KHAKI



STONE



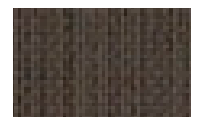
GUIDE



ARCHIVE



HARBOR



EXPANSE

# TECHNICAL INFORMATION

Width-Pattern	Fiber Content & Backing	Repeat	Abrasion (D.R.)	Light-fastness	Cleaning Code
54" BEELINE EPU ☞ ▲ ✱ ☹ ☆ *	100% EPU Polyurethane		900,000	200 Hrs. Class 4	W Bleach Cleanable (4:1)
54" CASHMERE II ☞ ▲ ✱ ☹ ☆ *	100% Polyurethane / PVC Free		500,000	200 Hrs. Class 5	W Bleach Cleanable (4:1)
54" ENDURANCE EPU ☞ ▲ ✱ ☹ ☆ *	100% EPU Polyurethane		1,000,000	200 Hrs. Class 4	W Bleach Cleanable (4:1)
54" EON EPU ☞ ▲ ✱ ☹ ☆ *	100% EPU Polyurethane	5/8" L 5/8" W	900,000	200 Hrs. Class 4	W Bleach Cleanable (4:1)
54" GROOVE EPU ☞ ▲ ✱ ☹ ☆ *	100% EPU Polyurethane	22 7/16" L 14 7/8" W	900,000	200 Hrs. Class 4	W Bleach Cleanable (4:1)
54" SILICA ☞ ▲ ✱ ☹ ☆ *	100% Silicone		365,000	200 Hrs. Class 4.5	WS Bleach Cleanable (4:1)
54" SILICA ETCH ☞ ▲ ✱ ☹ ☆ *	100% Silicone		270,000	200 Hrs. Class 4.5	WS Bleach Cleanable (4:1)
54" SILICA KIP ☞ ▲ ✱ ☹ ☆ *	100% Silicone	24 1/8" L 12 3/4" W	500,000	200 Hrs. Class 4.5	WS Bleach Cleanable (4:1)
54" SILICA LEATHER ☞ ▲ ✱ ☹ ☆ *	100% Silicone		210,000	200 Hrs. Class 4	WS Bleach Cleanable (4:1)
54" SILICA STRIDE ☞ ▲ ✱ ☹ ☆ *	100% Silicone	24 3/4" L 24 3/4" W	500,000	200 Hrs. Class 4.5	WS Bleach Cleanable (4:1)

\*ACT® Registered Certification Marks  
All patterns meet CA Bulletin 117-2013  
Primary Application: Upholstery Seating

## CLEANING CODE DEFINITIONS

W: Water-based foam or cleaner.

WS: Water-based cleaning agents or foam.

Bleach Cleanable (4:1): 1 part bleach, 4 parts water.

Always rinse promptly with clean water after applying the bleach solution.



GREENGUARD Certified. CA Section 01350 compliant.  
Eligible for CHPS Low-Emitting Material Credits.

# SOURCE

## Source International

17 Gilmore Drive  
Sutton, MA 01590

ph: 800.722.0474

[sourceinternationaldesign.com](http://sourceinternationaldesign.com)

Memo samples are available on request:  
call or visit our Web site.

**MOMENTUM**  
T E X T I L E S

Tel. 800-366-6839  
[memosamples.com](http://memosamples.com)